



JT Monitor

Table of Contents

Purpose.....	3
Installation Process	3
Ini Entry.....	4
Starting JT Monitor.....	4
Information and Actions.....	4
Starting and Stopping JT Monitor Service	4
Configuration.....	6
JT Engine.....	6
JT Live.....	6
Status Email.....	6
Alerts	7
Status	7
File Menu Options	8
Email Settings	8
Refresh Settings	8
Refresh Status	8

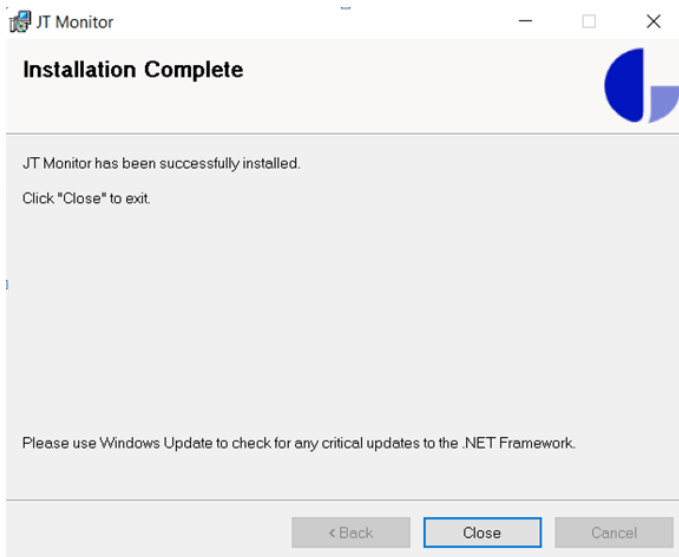
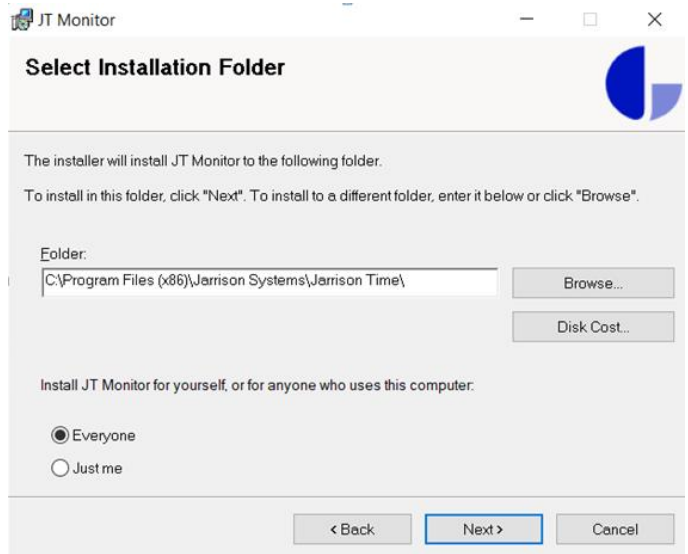
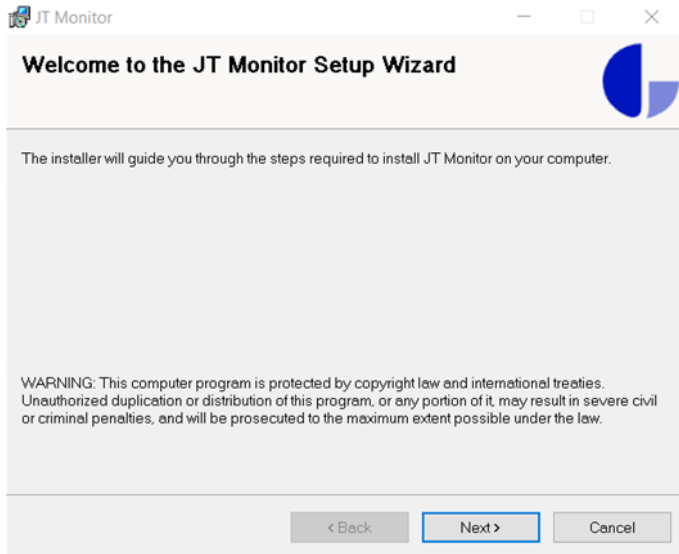
Purpose

JT Monitor is a service that monitors the status of the engine (application or service) as well as JT Live and starts these respective processes if they should stop unexpectedly.

Installation Process

JT Monitor must be installed on the same server that the Engine runs on.

Run the installation file. Below is the sequence of installation screens for JT Monitor. Click **'Next'** and then again on each successive screen.



Starting JT Monitor

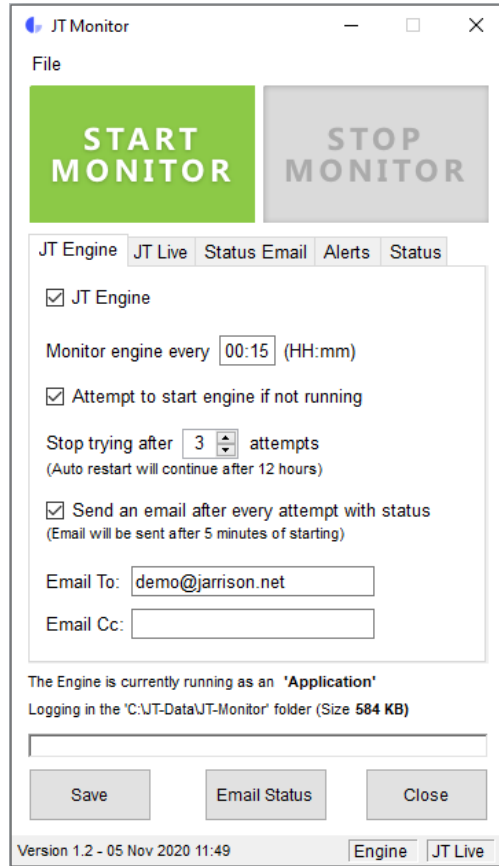
When installation has completed, launch Jarrison Time by double-clicking the application icon on the desktop, or locate the shortcut icon from the Start menu.

After launching, JT Monitor looks for the 'C:\JT-Data\Config\Monitor.ini' file, if not found one containing default values will be created. Thereafter settings need to be configured.

Ini Entry

An .Ini entry may be added as needed.

AdditionalLogs=Yes – will add extra detail (Device name and IP address) to the JT_Monitor log file in C:\JT-Data\JT-Monitor\Logs
The Alerts tab **Offline devices exceed** option should be enabled if using this entry.



Information and Actions

Starting and Stopping JT Monitor Service

This can be done by using the JT Monitor application. **Note: If the Engine is running as an Application, JT Monitor service should ONLY be started / stopped using JT Monitor application.**



If the 'Start Monitor' button is Green it indicates JT Monitor service is not running and can be started.



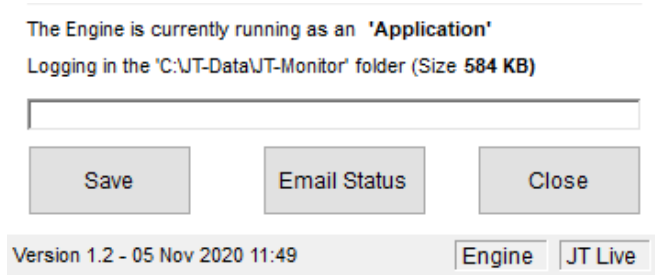
If the 'Stop Monitor' button is Red it indicates JT Monitor service is running and can be stopped

Alternatively JT Monitor can be started/stopped using Windows **Services**, accessed via **Control Panel\All Control Panel Items\Administrative Tools\Services** or via keyboard shortcut <Windows key> and <R> and entering "services.msc".

All activities regarding JT Monitor will be logged and these files can be accessed via

Log files located at 'C:\JT-Data\JT-Monitor\Logs\JT_Monitor'

'Logging in...' label displays the folder path where the Log files and Status files can be found as well as the Size of the folder in order to maintain the folder at low storage capacity. This folder can be accessed directly from the application by clicking on the size displayed in **bold**.



'Save' - Save any changes that have been made

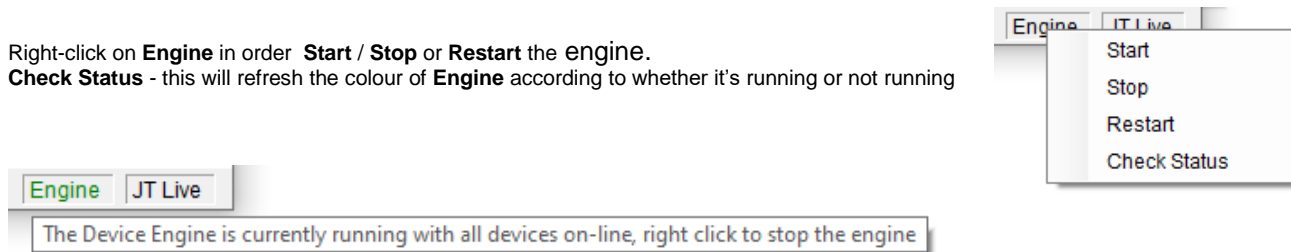
'Email Status' - This will send a 'Status Report' to the email address(es) entered in the 'Status Email' tab.

Close / Hide - Will hide the JT Monitor interface window in the system tray

Status Bar - Displays information regarding the time the service was started / stopped as well as the time a 'Status Report' has been sent via the 'Email Status' button.

Right-click on **Engine** in order **Start / Stop** or **Restart** the engine.

Check Status - this will refresh the colour of **Engine** according to whether it's running or not running



Engine text colouring legend:

Red = Engine is running with all devices offline

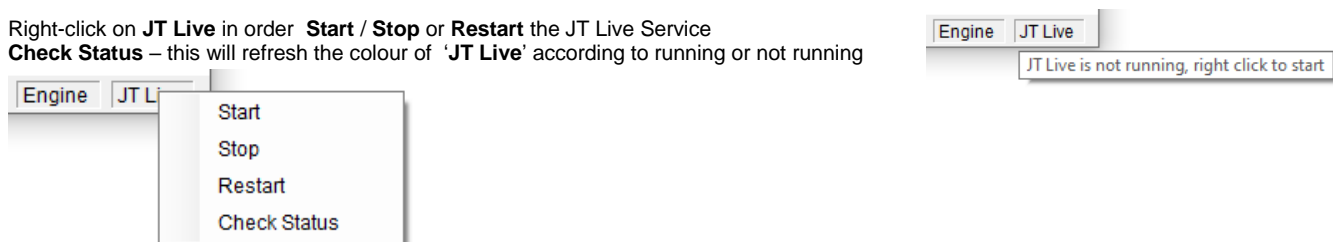
Green = Engine is running with all devices on-line

Orange = Engine is running with at least one device offline

Black = Engine is not running

Right-click on **JT Live** in order **Start / Stop** or **Restart** the JT Live Service

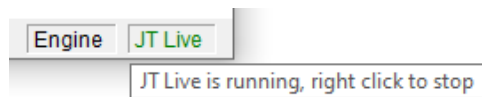
Check Status - this will refresh the colour of 'JT Live' according to running or not running



JT Live text colouring legend:

Green = JT Live is running

Black = JT Live is not running



Configuration

Various settings can be configured via the tabs, according to what's required by the system setup.

JT Engine

This tab configures options pertaining to the Engine.

Monitor engine every - Timer Interval to check the status of the engine (Running or Stopped)

Attempt to start engine if not running - if not selected, Monitor will log the status of the engine only.

Stop trying after - Monitor will attempt to start the engine the amount of times indicated by the selection (maximum of 20 attempts). If unsuccessful after the indicated number of attempts, Monitor will go into idle mode for 12 hours and not attempt to start the engine again.

Send Email after every attempt with Status - After each successful attempt, Monitor will send an email to the user giving the time that the engine was started with a 'Status Report' containing information about:

- Last import of transactions
- Device Queue
- Execution Interruptions
- Offline Devices
- Template Transfer Errors
- If Engine is running as a service or an application and the PC name where it is installed
- Engine Memory Usage
- Last Backup and the Backup Path
- Amount of Users currently logged into JT
- SQL Version and Instance Name
- Operating System plus the Memory Usage
- JT Database and Log database sizes

Email To - address to email Engine updates to

Email Cc - copy address to email Engine updates to

JT Engine JT Live Status Email Alerts Status

JT Engine

Monitor engine every (HH:mm)

Attempt to start engine if not running

Stop trying after attempts
(Auto restart will continue after 12 hours)

Send an email after every attempt with status
(Email will be sent after 5 minutes of starting)

Email To:

Email Cc:

JT Live

This tab will only be available for selection if the Jarrison Time database is using JT Live.

JT Engine JT Live Status Email Alerts Status

JT Live

Monitor JT Live every (HH:mm)

Attempt to start live if not running

Stop trying after attempts
(Auto restart will continue after 12 hours)

Send an email after every attempt with status
(Email will be sent after 5 minutes of starting)

Email To:

Email Cc:

Monitor JT Live every - Timer Interval to check the status of JT Live (Running or Stopped)

Attempt to start live if not running - if not selected, Monitor will log the status of JT Live only.

Stop trying after... - Monitor will attempt to start JT Live the amount of times indicated by the selection (max of 20 attempts). If unsuccessful after indicated attempts, Monitor will go into idle mode for 12 hours and not attempts to start JT Live again. Unless manually restarted.

Send Email after every attempt with Status - after each successful attempt, Monitor will send an email to the user giving the time that JT Live was started with a 'Status Report' containing information about (same as above)

Email To - address to email JT Live updates to

Email Cc - copy address to email JT Live updates to

Copy from Engine - this will copy and paste the email address/e from the JT Engine tab.

Status Email

This tab allows for the setup of an informational email with the following details:

- Time of last transaction import
- Device Queue listing
- Execution Interruptions
- Offline Devices
- Template Transfer Errors
- If Engine is running as a service or an application and the PC name where it is installed
- Engine Memory Usage
- Last Backup and the Backup Path
- Number of Users currently logged into JT
- SQL Version and Instance Name
- Operating System and Memory Usage
- JT Database and Log database sizes

All SQL and computer details used in the **Status Reports** will be saved, these files can be accessed at **C:\JT-Data\JT-Monitor\Status**

JT Engine JT Live Status Email Alerts Status

Status Email

Send a status email every (HH:mm)

Email To:

Email Cc:

Copy from Engine

Send a status email every - Timer Interval to send a 'Status Report' regularly with information from JT containing:
Email To - address to email Status updates to
Email Cc - copy address to email Status updates to
Copy from Engine - this will copy and paste the email address/e from the JT Engine tab.

Alerts

JT Monitor will run all specified alerts created every stated number of hours/minutes and if any of the alerts are flagged, an email will be sent listing the flagged alerts.

Check and send alerts every [00:00] hours - Timer Interval indicating number of hours/minutes to run specified alerts created

Import of clockings more than [00:00] hours ago - will monitor the imported transactions and if no clockings / transactions were imported in the last XX hours/minutes, this alert will be flagged

Restart Engine - Attempt to restart the engine at the same time the alert is sent.

Queued items older than [00:00] hours (Online Devices) - will monitor the queued entries for Online Devices only and if entries are in the queue for longer than XX hours/minutes specified, this alert will be flagged

Restart Engine - Attempt to restart the engine at the same time the alert is sent.

Offline devices exceed - if any 'Enabled' devices are offline when the Timer interval elapse, this alerts will be flagged

Execution interruptions exceeds - if X or more execution interruptions are present in the Engine Audit, this alert will be flagged

Template transfer errors exceed - if X or more templates transfer errors are present, this alert will be flagged

Engine RAM usage exceeds X MB - will monitor the amount of physical memory that is used by Device Engine / JT Engine and if the usage exceeds the specified Megabytes, this alerts will be flagged

Last backup exceeds X days - will monitor both automatic and manual backup options and if the date and time of the last backup are before 'X days' specified, this alert will be flagged

Email To - address to email Alerts updates to

Email Cc - copy address to email Alerts updates to

Copy from Engine - this will copy and paste the email address/e from the JT Engine tab.

JT Engine JT Live Status Email Alerts Status

Check and send alerts every hours

Import of clockings more than hours ago

Restart Engine

Queued items older than hours (Online Devices)

Restart Engine

Offline devices exceed

Execution interruptions exceeds

Template transfer errors exceed

Engine RAM usage exceeds MB

Last backup exceeds day

Email To:

Email Cc:

Copy from Engine

Status

JT Engine JT Live Status Email Alerts Status

Last clockings import: 1 Hour ago on 05 November 2020 at 10:52:23

Device Queue: 0

Execution Interruptions for today: Notice = 0, Warning = 0, Execution Interruptions = 0

Offline Device/s: 0

Template Transfer Errors: 0

Engine: Running as an application

Engine Memory Usage: Device Engine application is currently not running

Last Backup: There are no backups for this database. Please ensure to make a backup.

Backup Path: C:\JT-Backup

Users Logged In: 0

SQL Version: Server 2017

Instance Name: SQLEXP2017

Operating System: Microsoft Windows 10 Home Single Language

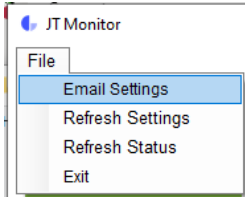
Refresh Icon - will display all information included in the **Status Report**.

The Engine is currently running as an 'Application'

Logging in the 'C:\JT-Data\JT-Monitor' folder (Size 1 MB)



File Menu Options



Email Settings

These settings need to be entered correctly in order for JT Monitor to email reports. You may need to ask the IT administrator for assistance with credentials.

SMTP Server - this is the Simple Mail Transfer Protocol server that will be used.

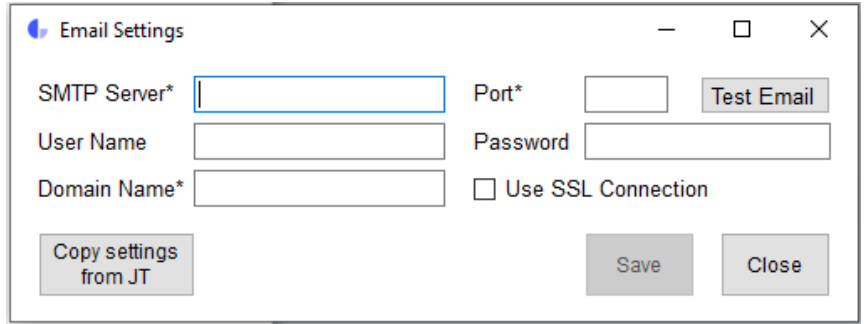
Username - the email username for the email account, not necessary in most cases.

Password - the email password for the email account but not necessary in most cases.

Domain Name - will be used in the email for the recipient.

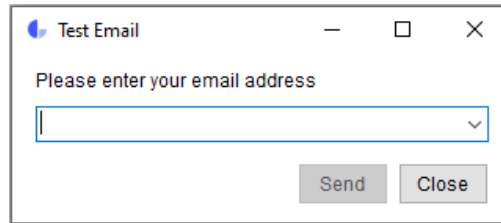
Port - 25 or 587 (double click to switch between these 2 Ports)

Use SSL Connection - Tick this box if your email settings use Secure Socket Level.

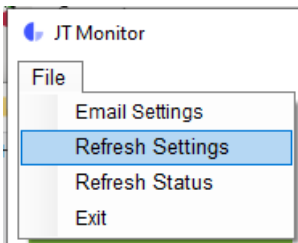


Alternatively click on 'Copy settings from JT' button, this will use the settings that is setup in Jarrison Time.

After the SMTP setting are setup a test email can be sent to see if the settings are setup correctly by clicking on the 'Test Email' button.

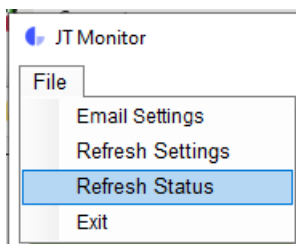


Refresh Settings



This can be used to refresh the display per any recent changes.

Refresh Status



Will run a status check and once done, open the Status Tab and display Status.