



iPulse Integration

Table of Contents

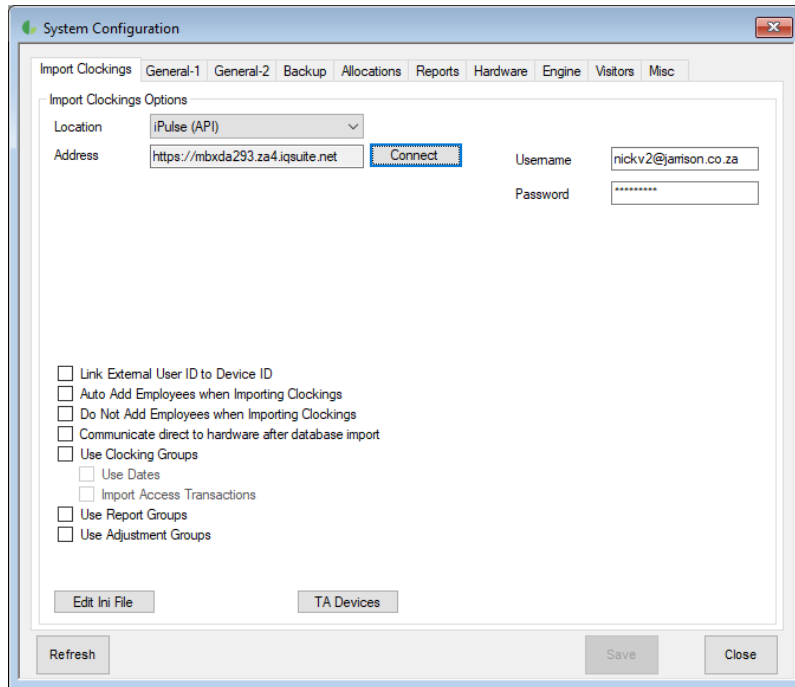
Introduction	3
Connecting Databases	3
Importing Transactions	4

Introduction

iPulse is a leading provider of cloud biometric access control solutions. Jarrison Time can be configured to import directly from an IQSuite cloud database.

Connecting Databases

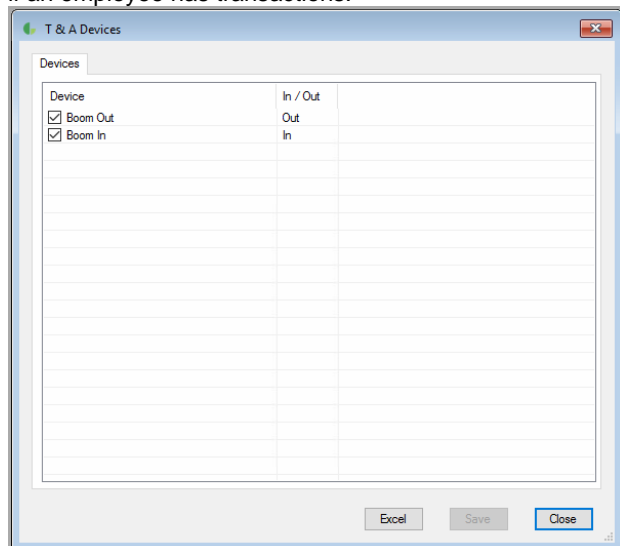
Connection between Jarrison Time and iPulse is setup in the **System Configuration** window of Jarrison Time (reached from **'Configuration'** on the menu bar, then **'System'**). Select **iPulse (API)** from the **Location** dropdown, then enter the username and password provided by iPulse (same username and password that is used to log into IQSuite). Once the username and password have been entered click **'Connect'**. After successful connection, **'Save'**.



Adding of employees

Auto adding of employees is available as an option in system configuration. Employee will be added once they have their first clocking at a selected T&A device. Alternatively employees can be added manually into Jarrison Time and the system will match the employee numbers available to determine if a transaction needs to be imported.

After successful connection to the database, time and attendance readers should be specified from **'Setup', 'T&A Devices'**. These devices determine which transactions to use for T&A calculations. Only selected devices will be added to the queries to confirm if an employee has transactions.



Importing Transactions

Employees must have clocked on designated T&A devices before they will import. Importing of transactions can be done manually or automatically.

Transaction import dates will default to the previous and the current dates. Where multiple imports are done on a day, Jarrison Time will determine if the transaction has been imported or not and add to the database if needed.

Automatic import of transaction can be scheduled as normal via the Engine (please see configuration manual for further detail).

The screenshot shows the 'System Configuration' window with the 'Engine' tab selected. The window is divided into several sections:

- Automation Settings:**
 - Collect transactions every 120 Minutes
 - Log import from each device separately in audit
 - Backup database daily at 23:00
 - Number of files to keep: 21
 - Include supplementary database
 - Designated "Computer Name": DESKTOP-GMNFU7N
 - Run Engine as: Application Service
 - Notify via email when any device goes offline for at least 3 minute/s
 - Send device offline email notices to: [empty field]
 - Enable the 'Notification via SMS' when selected devices go offline. Only SMS when offline for at least 5 minute/s
 - Enable the 'Notification via Email' when selected devices go offline. Only mail when offline for at least 3 minute/s
 - Process 'Leave Accrual' daily
 - Number of days to keep log files: 14
- Hardware:**
 - Auto update time on devices from the 'Device Engine' computer every 24 Hours
 - Set the ping interval to 10 Seconds
 - Show Advanced Options
- Email Settings:**
 - SMTP Server: smtp.provider.com-Support
 - Port: 25
 - User Name: [empty field]
 - Password: [empty field]
 - Domain Name: company.com
 - Use SSL Connection
 - Buttons: Test Email settings
- SMS Settings:**
 - User Name: [empty field]
 - Password: [empty field]
 - Web URL: http://bulksms.2way.co.za-Support-Support
 - Port: Port 5567 Port 80
 - Buttons: Test SMS settings
 - Note: To create an sms account, for a username and password, please go to www.bulksms.2way.co.za

At the bottom of the window are buttons for 'Refresh', 'Save', and 'Close'.